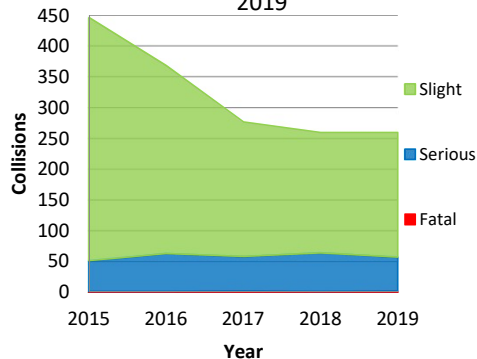


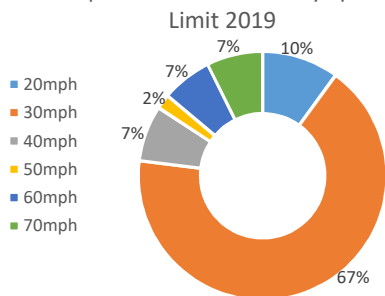
Road Safety

Collisions by Year and Severity 2015 to 2019

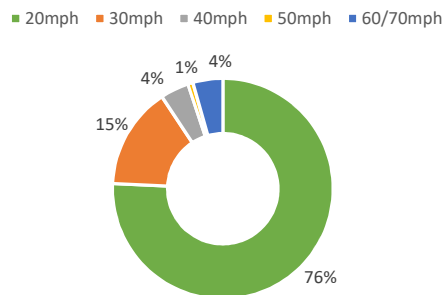


14% reduction in all collisions 2016-18 to 2019

Proportion of Collisions by Speed Limit 2019



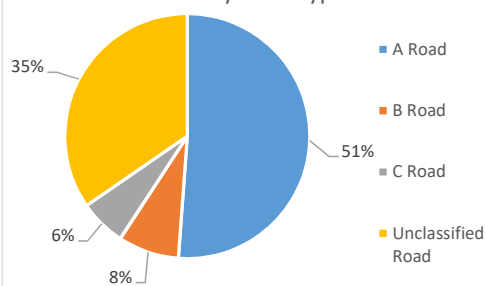
Speed Limits in North Tyneside



There are 6 Cluster Sites in North Tyneside within the 3 year period 2017 - 2019

A Cluster Site is defined by at least 5 Collisions within a 50m radius

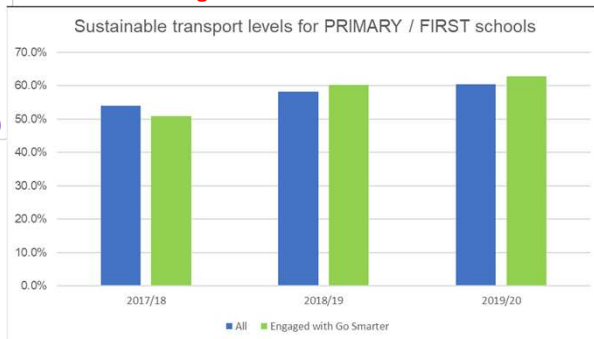
Collisions by Road Type 2019



Transport Strategy Data Factsheet 2019/20

Sustainable Travel

Go Smarter delivered 23 activities to 17 schools, collecting data from 57. 8 schools have received walking and cycling infrastructure in the 2019/20 academic year. Surveys show over 66% of total school journeys (including secondary schools) are by sustainable travel, with a future target of 75%.



Sustainable travel is 'Active' travel (walk, cycle, scooter) plus 'other sustainable travel (train / Metro, bus, park and stride)

Training Engaged with:

- 5,876 school pupils through Go Smarter;
- 2,238 received Bikeability Training; and
- 3,820 received Road Safety Training.



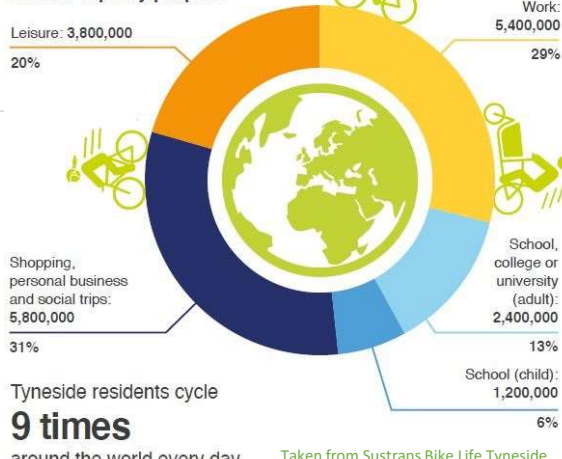
Cycling

16 Schemes delivering approx. 8.8km new / upgraded infrastructure. Plus 7 Access Improvement Schemes. Sustained cycling growth in North Tyneside.

Decrease in collisions involving cyclists from 56 to 43.

Sustrans Regional Cycling Behaviour Survey:

Annual trips by purpose*



Tyneside residents cycle

9 times

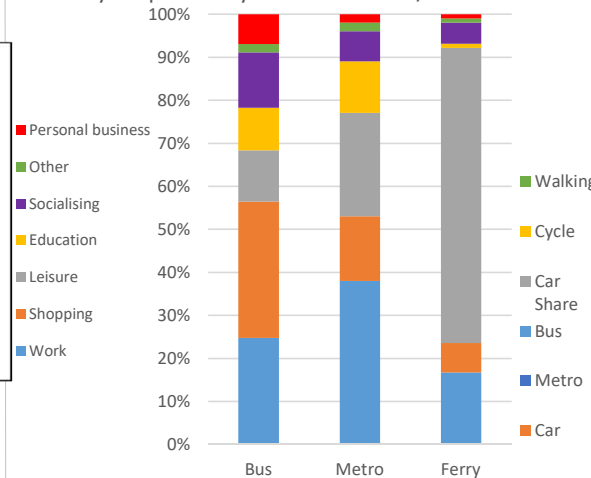
around the world every day

Taken from Sustrans Bike Life Tyneside

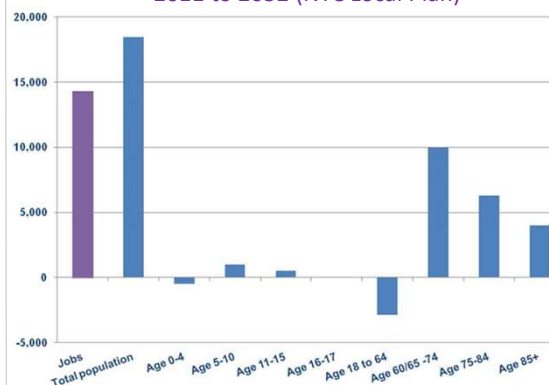
Note: The annual report covers the period 1 April 2019 to 31 March 2020, hence the data presented here generally precedes the 'lockdown' period associated with the Covid-19 pandemic.

North Tyneside Travel Trends

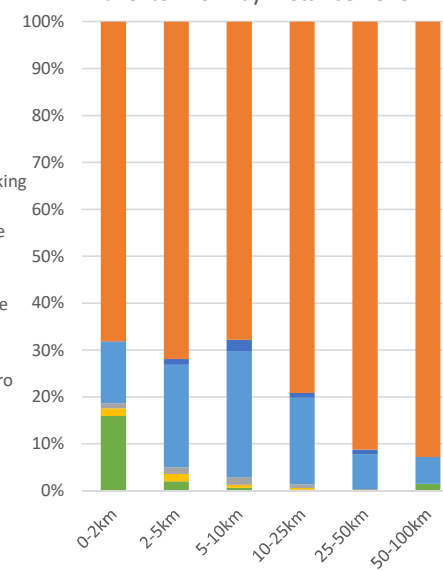
Journey Purpose in Tyne & Wear 2018/19



Predicted Growth in North Tyneside 2011 to 2032 (NTC Local Plan)



Cobalt Business Park Main method of Travel to Work by Distance 2019



Investment

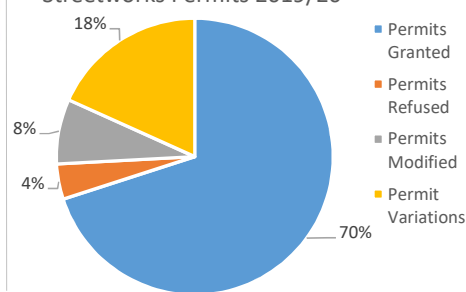
Continued investment in Major Schemes with 6 schemes delivered this year which includes 2 schemes with elements of developer funded works.

In 2019/20 there were approx. 23.45km of Highways resurfaced out of a network of c.800km.

In 2019/20 there were 32 parking improvement schemes delivered (e.g. double yellow lines etc.).

Network Management

Streetworks Permits 2019/20



37% of North Tyneside is within 800m of a Metro Station

352,928 trips on the Ferry in 2019/20.

Approx. 5.9 million miles of bus journeys within North Tyneside in 2018/19 and approx. 32.998 million trips on the Metro Network in 2019/20.

There are 962 Taxis (hackney carriages and private hire vehicles) Registered in North Tyneside.

127 locations covered by driver speed feedback sign programme.

3 journey time monitoring corridors with a further 8 to follow.